

# Teaching from Home: Network Support Perspectives

Jianping Pan | University of Victoria, BC, Canada | Pan@UVic.CA



\* weareteachers.com



\* teach4theheart.com

## How?



Covid-19



Covid-19



Covid-19

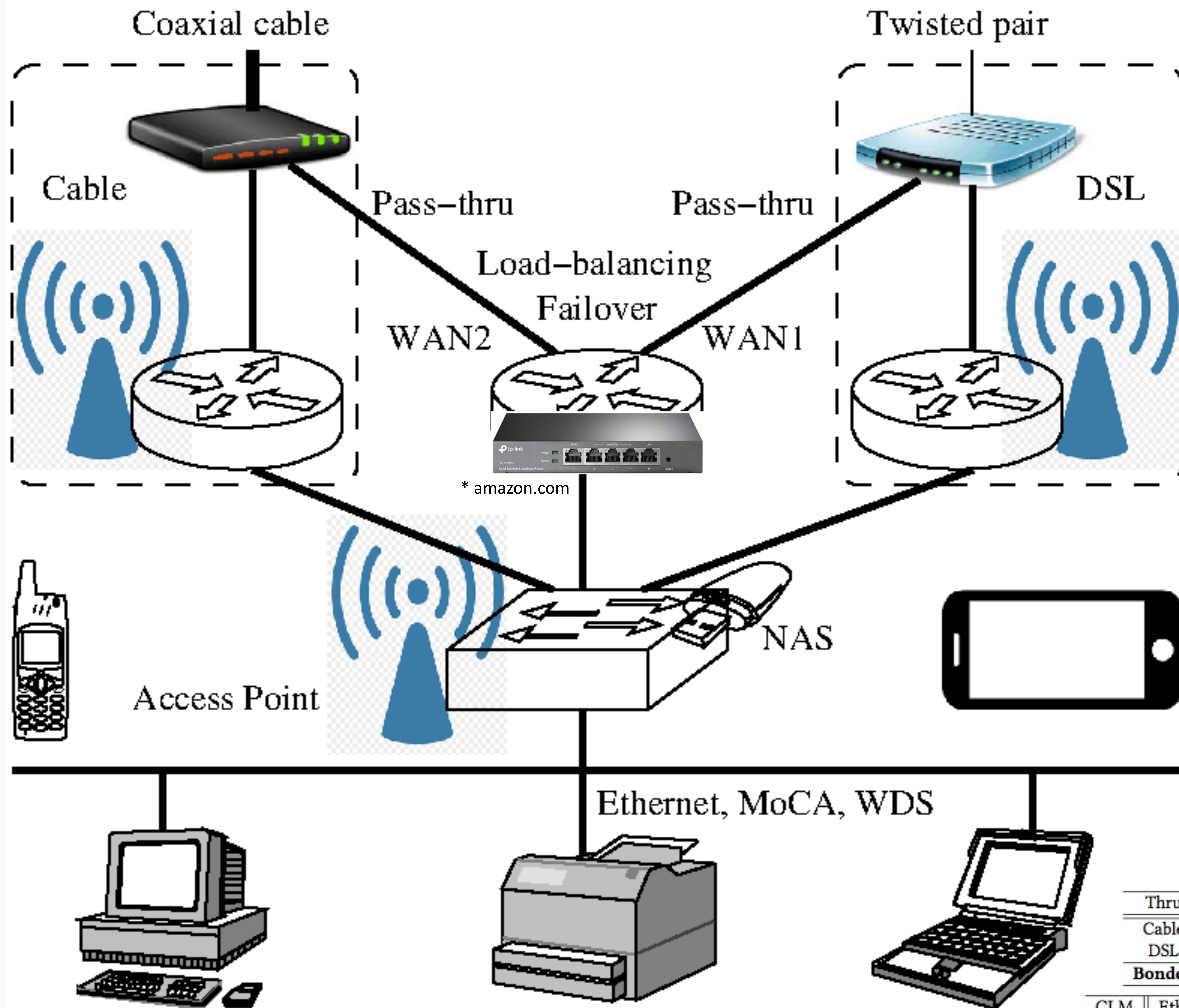
\* worldsofeducation.org



\* pressandguide.com



\* jordanlewis.org

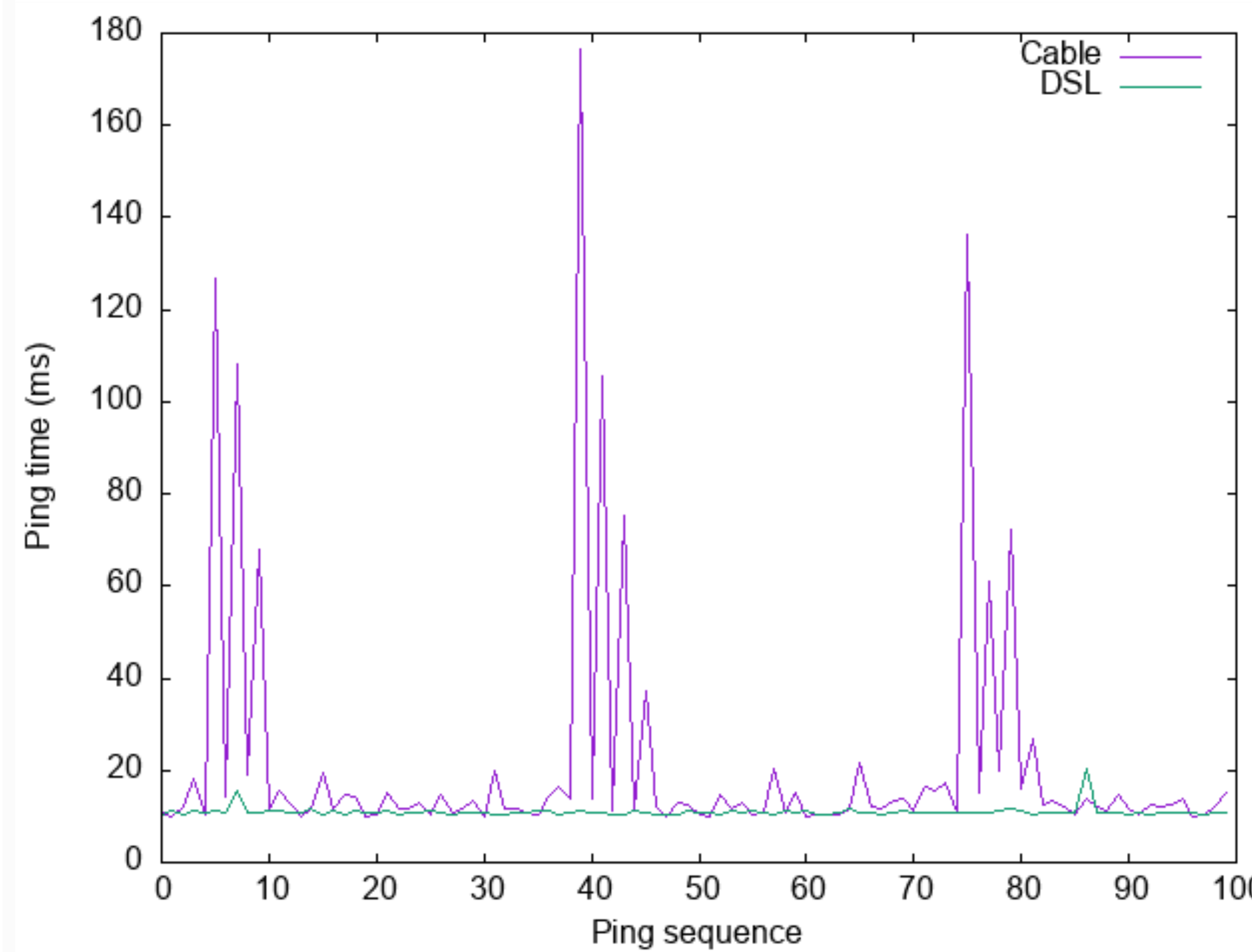
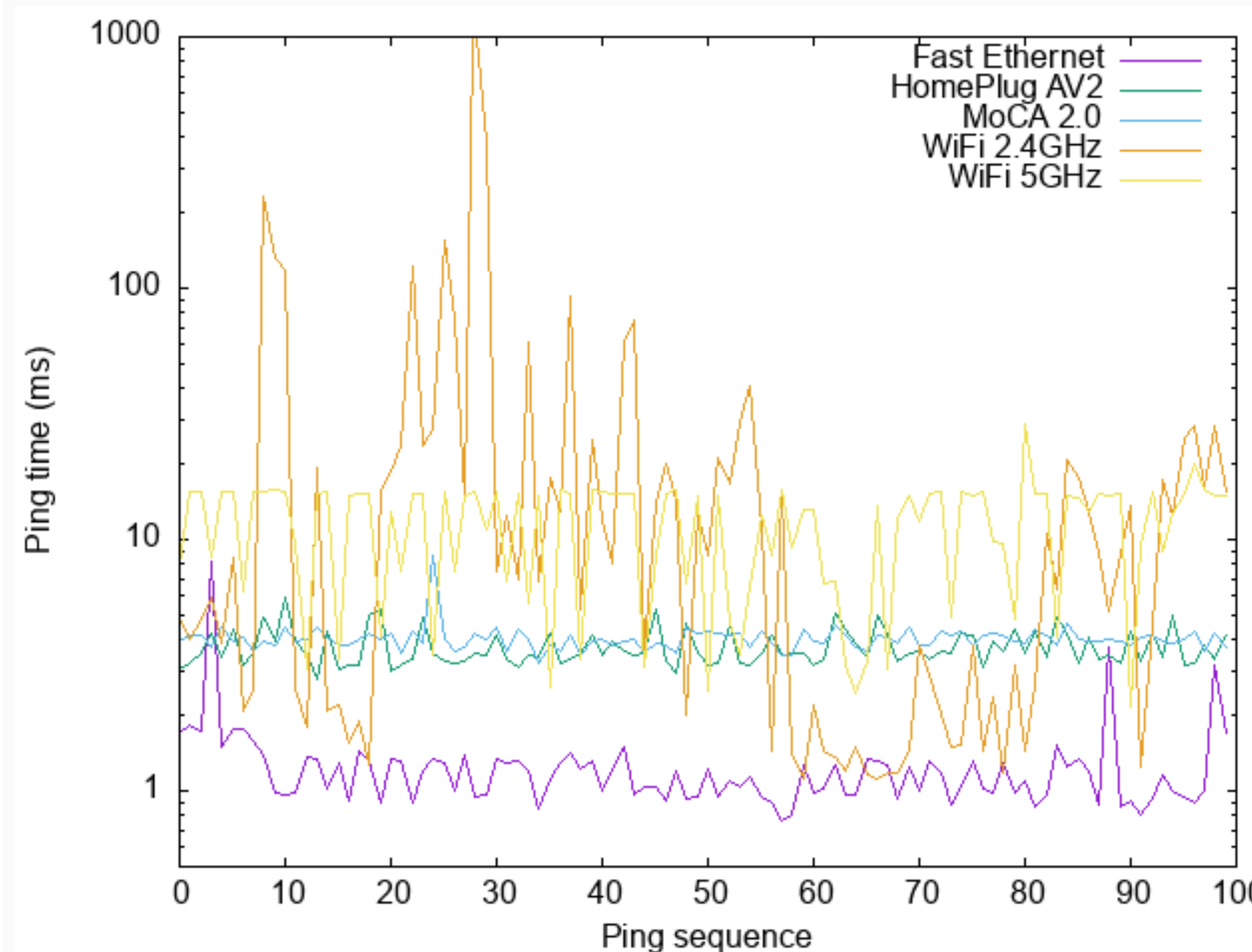


\* amazon.com

1. Pedagogical challenges
2. Technical challenges



\* forums.att.com



Thru	To Cable hosted server	DSL (ping, down/upload)
Cable	13 ms, 59.18/5.28 Mbps	13 ms, 57.43/5.32 Mbps
DSL	11 ms, 24.55/2.84 Mbps	10 ms, 24.25/2.81 Mbps
Bonded	11 ms, 80.99/8.15 Mbps	10 ms, 83.03/8.14 Mbps

CLM	Ethernet	WiFi	Cable (t: timer)	DSL (down/up)
App	0/0 sec	1/0 sec	t/0 sec	t/t sec
Web	40/0 sec	40/0 sec	3t/0 sec	2t/3t sec

